

# C.I.P.

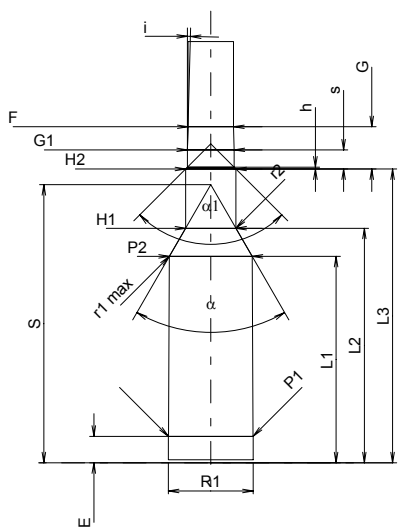
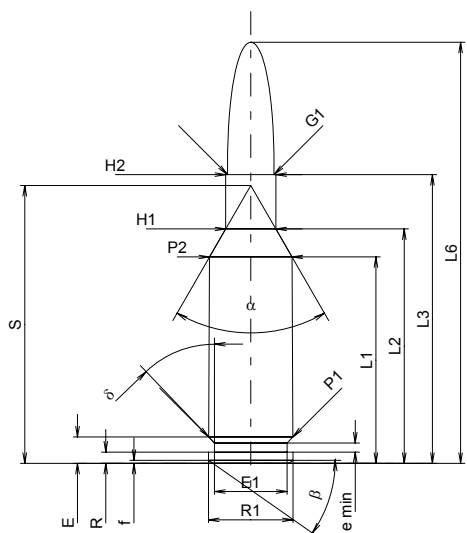
## 6 mm PPC

Country of Origin: US

TAB. I

Date 84-06-14

Revision 02-05-15



Scale 1:1

Dimensions in << mm >>  
Dimensions and Tolerances for Proof Barrels  
see Appendix CR 1.

### CARTRIDGE MAXI

#### Lengths

L1 <sup>1)</sup>	=	27.30	-0.20
L2 <sup>1)</sup>	=	31.00	-0.20
L3 <sup>1)</sup>	=	38.18	
L4	=		
L5	=		
L6	=	55.70	

#### Case Head

R	=	1.50	
R1	=	11.18	
R3	=		
E	=	3.50	
E1	=	9.60	
e min	=	1.20	
delta	=	43°43'12"	
f	=	0.40	
beta	=	35°	

#### Powder Chamber

P1	=	11.13	
P2 <sup>1)*</sup>	=	10.92	-0.20

#### Junction Cone

alpha*	=	60°	
S*	=	36.76	
r1 min	=		
r2	=		

#### Collar

H1*	=	6.65	
H2 <sup>1)</sup>	=	6.65	

#### Projectile

G1 <sup>1)</sup>	=	6.17	
G2	=		
F	=		
L3+G <sup>1)</sup>	=	43.76	

#### Pressures (Energies)

##### Method Transducer

Pmax	=	4050 bar	
PK	=	4658 bar	
PE	=	5060 bar	
M	=	17.50	
EE	=	2250 Joule	

#### Miscellaneous Dimensions

Fe <sup>1)</sup>	=	0.10	
delta L	=		

### CHAMBER MINI

#### Lengths

L1	=	27.30	
L2	=	31.02	
L3 <sup>1)</sup>	=	38.86	

#### Breech

R	=		
R1	=	11.20	
R2	=		
R3	=		
r	=		

#### Powder Chamber

E	=	3.50	
P1 <sup>1)</sup>	=	11.17	
P2*	=	10.95	

#### Junction Cone

alpha <sup>1)*</sup>	=	60°	
S*	=	36.78	
r1 max	=	1.52	
r2	=	1.52	

#### Collar

H1*	=	6.65	
H2 <sup>1)</sup>	=	6.65	

#### Commencement of Rifling

G1 <sup>1)*</sup>	=	6.18	
G <sup>1)</sup>	=	5.58	
alpha1*	=	90°	
h	=	0.24	
s	=	2.52	
i <sup>1)*</sup>	=	1°30'	
w	=		

#### Barrel

F <sup>1)*</sup>	=	6.02	
Z <sup>1)</sup>	=	6.17	

#### Grooves

b	=	2.29	
N	=	6	
u	=	551.00	
Q	=	29.52	mm <sup>2</sup>

Notes: 1) Check for safety reasons  
\* Basic dimensions